



# Baby Kingdom

Environmental Protection Education Fund

親子王國環保教育基金



## 2012 年報

### Annual Report 2012

I ♥  
the  
Earth



凌治與你

稅月無憂

車淑梅小姐

## 服務範圍

會計服務

稅務服務

公司成立及顧問

實地審核及稅務調查

投資管理及顧問

秘書服務

中國投資發展

合併及收購顧問

公司重組及清盤顧問

公司清盤服務

☎ 新界大埔廣福道33號美德大廈2字樓D&E2室

☎ 電話: 8126 8126

☎ 傳真: 2663 3208

☎ 尖沙咀山林道9號卓能中心7樓701室

☎ 電話: 2317 1866

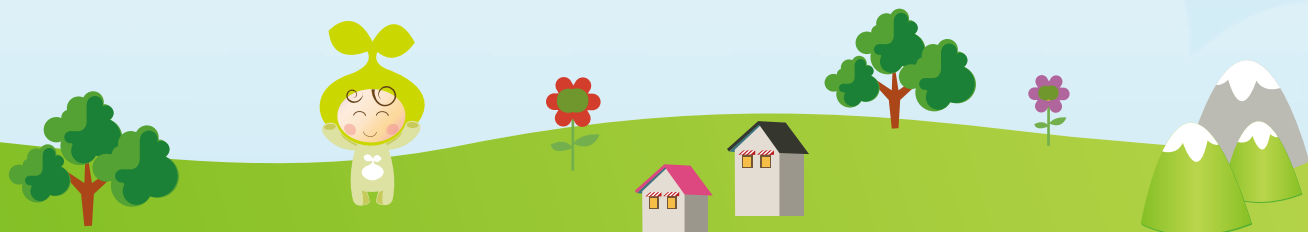
☎ 傳真: 2317 1880

🌐 網址: <http://www.cnyaccounting.com.hk/>



# 目錄 C o n t e n t

機構簡介 Introduction	2 - 3
主席的話 Message from Chairperson	4 - 5
委員會的話 Message from Committee Members	6
顧問團成員 Consultant Group Members	7
組織架構圖 Organizational Chart	8
活動概覽 Activities Overview	9 - 16
鳴謝人士 Acknowledgements	17
財務報告 Financial Reports	18 - 30
捐款方法 Donation Support	31
義工招募 Volunteers Recruitment	32







# 機構簡介

## Introduction

「親子王國環保教育基金」於2008年4月成立，致力親子教育和支援，深信良好的親子關係能促進孩子的成長發展和開創美好的將來。為了進一步伸延這個使命，讓下一代能於健康環境成長，親子王國環保教育基金希望透過推動環保教育，讓孩子從小開始關注生態，並從小做起參與保護環境。

親子王國有限公司是環保基金的其一創辦人，透過基金將部分收益用作捐獻以支持多個環保社區的教育項目及活動。親子王國環保教育基金，近年積極舉辦各類教育活動，例如：巡迴全港小學的「小國王愛地球講座」、環保小貼士創作比賽、活化舊書大行動及校園自然閣資助計劃等。

## 成立宗旨

- 1 推動本港環保教育工作
- 2 致力讓孩子從小建立關注生態和愛護環境的概念
- 3 培育孩子建立正確的價值觀，珍惜生態資源和承擔社會責任
- 4 為下一代建立一個可持續發展和健康的生活環境

## 服務範圍

-  環保教育講座
-  環保教育閣
-  環保活動工作坊
-  親子環保活動
-  綠田園生活體驗



"Baby Kingdom Environmental Protection Education Fund" was established in April, 2008. We devote our efforts to parent-child education and support. We believe good parent-child relationship can contribute to a child's growth and pave a way for their happy future. In order to further extend this mission and enable the next generation to grow in a healthy environment through environmental protection education, Baby Kingdom Environmental Protection Education Fund draws children's attention to the ecology since childhood, and encourages their participation in environmental protection.

Baby-Kingdom.com Limited is the founder of the Environmental Protection Education Fund. It donates part of the proceeds to the Fund to support the community educational projects and activities. The Fund has organized various environmental education projects such as "Little King Love the Earth" Environmental Education Talks, Green Tips Competition, Book Revitalization Campaign and "Eco Garden in School" Funding Scheme etc.

## Our Mission

- 1 To promote environmental protection in Hong Kong
- 2 To develop ecological awareness and environmental protection concept from childhood
- 3 To build a positive attitude of children : save ecological resources and undertake social responsibility
- 4 To establish a sustainable and healthy environment for our future generations

## Service Scope

-  Environmental Education Talk
-  Environmental Education Corner
-  Environment Workshop
-  Parent-Child Environmental Activity
-  Eco-Life Experience





## 主席的話 Message from Chairperson



親子王國環保教育基金主席 周偉忠先生  
Mr. Chow Wai Chung, Winson (Chairperson & Founder)

過去一年是豐盛的一年，親子王國環保教育基金完成了創造健力士紀錄的嬰兒車步行籌款活動，除了讓家長參與，亦讓手抱嬰兒一同參與，讓孩子在年幼時開始參與環保活動，意義十分重大！我們亦在過去一年巡迴全香港18區的學校進行教育講座，服務接近30所學校，將環保訊息帶給超過10,000位學童。我們深信環保工作是需要持續的，是由教育開始的，亦是我們基金成立的目的。在來年，我們計劃將教育講座活動擴展至幼稚園等，希望會帶來更豐盛的成果。

作為經濟發達及物質供應遠超生活所需的香港社會，兒童難以將環保與生活聯繫，他們於日常接觸到的環保資訊，每每集中於如何避免浪費，不要做這樣，不要做那樣。而我們認為環保教育，可以從生活體驗開始，所以過去一年，我們努力爭取申請政府一幅位於市區的環保用地，在此興建教學中心，讓兒童真正體驗環保，從建築運用的材料，各種能源的設施等，開啟兒童的思維。

未來人類愈依賴科技，愈需要與大自然取得平衡，讓我們共同努力；讓兒童在年幼時得到多元環保教育，共同建設美好健康的世界。



Last year was a hearty and fruitful year to us! We attempted to break the Guinness World Records - "Most People Pushing Prams", in which parents and their babies joined hands with us to break the record as well as to promote green living. It is significant to promote love and concern for the environment to the children at a young age. In addition, we had held a series of environmental protection education seminars in nearly 30 primary schools over the 18 districts to share the environmental protection message with more than 10,000 students. We truly believe that it is important to pass on the torch of environmental protection work to the young for sustainable development and so we kicked off our work from education. This is also the reason for establishing the Environmental Protection Education Fund. In the coming years, we are going to extend the education talks to kindergartens and we hope that it will bring a more effective and fruitful result.

Hong Kong is such a developed society that the material supply here is far more than necessary. It is difficult for our children to link up environmental protection with their daily life as they can only obtain limited information for how to avoid wastage instead of turning waste into other use. We believe that environmental protection education could get started from life experience. Therefore, we strived to apply for a piece of urban land from the Government last year so as to build a teaching centre which will allow children to learn and experience more on green living. We are planning to use recycling building materials and to install a variety of energy-saving facilities, which will probably enlighten our next generations on green living.

The more we rely on technology, the greater the need to strike a balance with nature in the future. Let's work together to provide environmental protection education to children and to build a sustainable healthy and beautiful world.







## 委員會的話

### Message from Committee Members



親子王國環保教育基金副主席  
薛嘉龍先生

Mr. Sip Ka Lung, Rainer (Vice - Chairperson)

「親子王國環保教育基金」成立經已兩年，而這次是我第一次為年報撰文，興奮心情，無法言喻！基金在過去短短兩年間，推行了多項環保教育計劃，包括超過50場的校園講座、舊書回收、玩具回收、環保小貼士大賽等活動。最矚目的要算是2012年11月11日舉行的「One One One 嬰兒車步行籌款」，當日超過700個家庭合共三千多人參加，一同打破最多嬰兒車健步行的健力氏世界紀錄。這些活動不但得到父母的正面回應，更得到各界熱烈的支持，證明我們的努力得到廣泛認同。在未來日子，我們會繼續竭力讓環保小種子在下一代萌芽，並茁壯成長，生生不息。

This is my first time to write for the annual report and I am so excited to write for the Baby Kingdom Environmental Protection Education Fund which has been established for two years. Just in two-year time, we have implemented a variety of environmental education programs, including more than 50 education seminars in schools, Book Revitalization Campaign, Toys Recycling, Green Tips and Slogan Competition. The most remarkable one is the "One One One Charity Baby Walkathon" which held on 11<sup>th</sup> November, 2012. The event attracted more than 700 families with a total of 3000 people to join us together to challenge the Guinness World Records - "Most people pushing prams". All these activities not only received positive feedback from the parents but also enthusiastic support of people from all walks of life; it shows that our efforts are widely recognized by the general public! In the future, we will continue our work and strive to let the seeds we sowed continue to sprout and thrive along the next generations.



## 顧問團成員

## Consultant Group Members



林翠蓮女士(義務司庫)  
東區區議員

Ms. Lam Chui Lin, Alice  
(Treasurer)  
Eastern District Council Member



陳敏儀女士  
家長匯習創會會長

Ms. Chan Man Yee  
President & Founder of Parenting  
Forum



周婉芬博士  
樂苗坊註冊心理學家

Dr. Chau Yuen Fan, Iris  
Registered Psychologist  
Centre for Enhancement,  
Assessment & Counseling



黃岳永先生  
有機上網行政總裁

Mr. Erwin Huang  
CEO of WebOrganic



程偉強先生  
偉強顧問公司董事

Mr. Ching Wai Keung  
Director of Wai Keung Consultant  
Company



黃偉強先生  
加拿大神召會嘉智中學校長

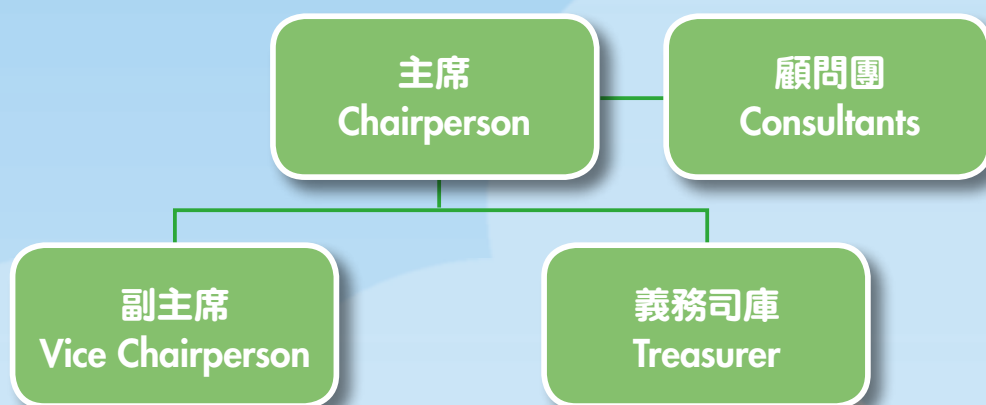
Mr. Wong Wai Keung  
Principal of PAOC Ka Chi  
Secondary School





# 組織架構圖 Organizational Chart

## 親子王國環保教育基金 - 組織架構圖 Baby Kingdom Environmental Protection Education Fund – Organizational Chart



## 親子王國環保教育基金 - 辦事處組織架構圖 Baby Kingdom Environmental Protection Education Fund – Office Structure





# 活動概覽 Activities Overview

## 樂活博覽 2012

本會於2012年2月10日至12日應主辦單位邀請參加了全港首屆的樂活博覽。展覽當日我們於攤位內教授製作環保小手工，啟發小朋友的創造力，多動腦筋將廢物加以改造，製作成可愛的環保小手工，活動吸引了大批的兒童及家長到臨參加。

## LOHAS Expo 2012

The Baby Kingdom Environmental Protection Education Fund was invited to join the first LOHAS Expo on 10-12 February 2012. All visitors came to our booth to learn making some environmental friendly handicraft. This handicraft not only inspired children's creativity, but also let them to turn the waste into some lovely products. A large number of children and parents had been attracted to join this event.



充滿環保氣息設計的工作坊  
Environmental friendly designed workshop





## 活動概覽 Activities Overview

### 「小國王愛地球」環保教育講座2012

「小國王愛地球」環保教育講座是以互動教育講座的形式，內容包括：認識環保、國王卡通故事分享、問題討論的方式，讓學童認識空氣污染、珍惜水資源、噪音、環境衛生污染等問題。透過國王的故事，引導學童了解污染所帶來的問題，學會怎樣在日常生活中實行。



講座內容包括污染與地球的威脅、環保與我們、卡通故事分享、環保小貼士等，讓學童在輕鬆的氣氛下學習，分享自己對環保的心得。而透過分享的問題，引導學童加深對環保的認知和察覺。

講座推出以來反應熱烈，截至2012年12月31日，本會共到訪近30間小學，參與人數達10,000人。

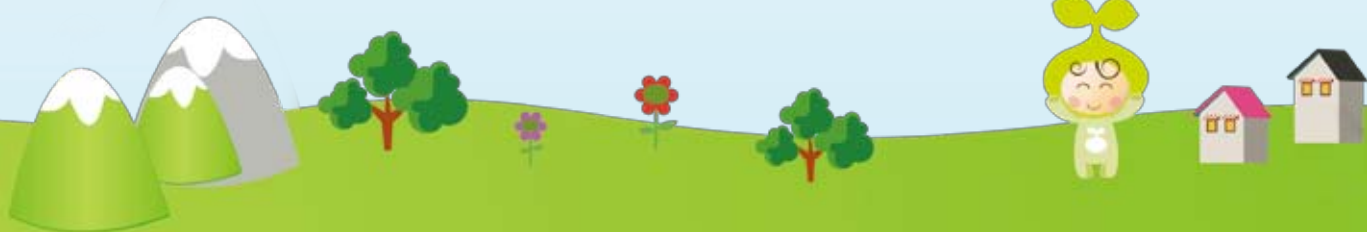
### “Little King Love the Earth” Environmental Education Talk

“Little King Love the Earth” Environmental Education Talk is in the form of interactive seminar which includes different sessions: Understand More About Environmental Protection, Story Cartoon and Discussion so as to let the students learn more about the issues of air pollution, noise pollution, environmental hygiene and to treasure the water resources. Through the vivid cartoon story of the Little King, students could easily understand the pollution problems and learn how to implement green living in daily life.



The education talk covers pollution and its threat to the Earth, environmental protection issues, sharing of the king's story and green tips, which allows students to learn in a relaxing atmosphere and to share their views. Through the sharing sessions, students' awareness and perception towards environmental issues have been aroused.

The Education Talk is welcomed by the schools since its launch. Up to 31 December 2012, the Baby Kingdom Environmental Protection Education Fund has visited nearly 30 primary schools, with more than 10,000 participants.



## 2012年已參與「小國王愛地球講座」之學校 School participated the environmental education talk 2012

學校 School	班級 Class	參與人數 No. of participants
九龍灣聖若翰天主教小學 Kowloon Bay St. John The Baptist Catholic Primary School	P3 - P4	283
崇真小學暨幼稚園 Tsung Tsin Primary School And Kindergarten	P1 - P2	270
樂善堂楊仲明學校 Lok Sin Tong Yeung Chung Ming Primary School	P1 - P4	300
華富邨寶血小學 Precious Blood Primary School (Wah Fu Estate)	P1 - P6	400
觀塘官立小學(秀明道) Kwun Tong Government Primary School (Sau Ming Road)	P1 - P2	370
基督教神召會梁省德小學 Assembly Of God Leung Sing Tak Primary School	P1 - P6	200
保良局雨川小學 PLK Riverain Primary School	P1, 2, 5	385
基督教香港信義會禾輦信義學校 The ELCHK Wo Che Lutheran School	P1 - P2	100
順德聯誼總會梁潔華小學 STFA Leung Kit Wah Primary School	P2 - P3	245
秀明小學 Sau Ming Primary School	P1 - P3	382
路德會呂祥光小學 Lui Cheung Kwong Lutheran Primary School	P4 - P6	380
中華基督教會全完第一小學 CCC Chuen Yuen First Primary School	P1 - P3	125
保良局何壽南小學 PLK Stanley Ho Sau Nan Primary School	P4 - P6	420
仁愛堂田家炳小學 Yan Oi Tong Tin Ka Ping Primary School	P4 - P6	450
順德聯誼總會伍冕端小學 STFA Wu Mien Tuen Primary School	P1 - P6	859
塘尾道官立小學 Tong Mei Road Government Primary School	P1 - P3	270
港澳信義會明道小學 HK & Macau Lutheran Ch Ming Tao Primary School	P1 - P6	880
聖嘉祿學校 St Charles School	P1 - P5	140
慈雲山聖文德天主教小學 TWS St Bonaventure Catholic Primary School	P1 - P5	650
中華基督教會灣仔堂基道小學 CCC Wanchai Church Kei To Primary School	P1 - P4	330
東華三院高可寧紀念小學 T.W.G.Hs Ko Ho Ning Mem Primary School	P1 - P6	450
香島道官立小學 Island Road Government Primary School	P1 - P6	180
保良局蕭漢森小學 PLK Siu Hon-Sum Primary School	P1 - P6	630
大埔浸信會公立學校 Tai Po Baptist Public School	P1 - P6	380
五旬節靳茂生小學 Pentecostal Gin Mao Sheng Primary School	P1 - P6	800
粉嶺官立小學 Fanling Government Primary School	P4 - P5	190
佐敦道官立小學 Jordan Road Government Primary School	P1 - P6	300
總人數 / TOTAL		10369







## 活動概覽 Activities Overview

### One One One 嬰兒車步行籌款2012

「One One One 嬰兒車步行籌款活動2012」已於2012年11月11日(星期日)順利舉行，當日有678個精靈BB及超過1600位父母參與是項活動，並挑戰打破「同一時間最多人推BB車」的健力士世界紀錄。很高興看到有一些參加家庭悉心打扮、穿著特別服飾，甚至改裝BB車出席活動；受訪的參加者都表現開心和滿意，而且能快而準地說出沿路上見到的「環保小貼士」，並承諾會將環保訊息帶回家，整個活動在一片愉快歡欣聲中完成！



### One One One Charity Baby Walkathon 2012



"One One One Charity Baby Walkathon 2012" was successfully held on 11 November 2012 (Sunday). 678 babies and more than 1600 parents participated in the Walkathon together to challenge the Guinness World Records - "Most People Pushing Prams (Strollers)". Some families were beautifully dressed with special clothes, and even decorated the baby prams for the event. Participants were happy and cheerful with the charitable

walkathon. They were able to tell the green tips accurately which they learnt along the way during the event and they also promised to put the environmental protection tips into practice. The Walkathon was finished in laughter and joy !



主禮嘉賓(左起)：Officiating guests (From left):

親子王國環保教育基金顧問 黃偉強校長  
Consultant of Baby Kingdom Environmental Protection Education Fund  
Mr. Wong Wai Keung

冠名贊助3300 耗牛奶粉(香港總代理)  
中華廚房有限公司主席 梅建斯先生  
Representative of Title Sponsorship 3300 Yak Milk Powder  
(Chairperson of Chinese Kitchen Company Limited)  
Mr. Felix Mui

活動大使 黃浩然先生  
Event Ambassador Mr. Wong Ho Yin, Raymond

起步禮鳴槍大使 車淑梅小姐  
Kick-off Ambassador Ms. Che Shuk Mui

親子王國環保教育基金主席 周偉忠先生  
Chairperson & Founder of Baby Kingdom Environmental Protection Education Fund  
Mr. Chow Wai Chung, Winson

凌治會計管理有限公司主席 徐洪輝先生  
Director of C & Y Accounting Management Limited  
Mr. Danny Chui

親子王國環保教育基金顧問 程偉強先生  
Consultant of Baby Kingdom Environmental Protection Education Fund  
Mr. Ching Wai Keung



最高籌款得獎家庭

Top-fundraising Awarded Families







## 活動花絮 Highlights









## 活動概覽 Activities Overview

### 「小國王愛地球」標語創作比賽

為了進一步在學校推廣環保的生活習慣，本會於2012年7月至9月特別邀請曾參與「小國王愛地球講座」之學生，參與環保標語創作比賽。而參加的學生共有500多位，分別來自不同地區的學校。透過比賽希望令學童加深對環保的認知，而得獎的作品亦於「One One One 嬰兒車步行籌款活動2012」的環保大道展示。

### “Little King Love the Earth” Environmental Protection Tips and Slogan Competition

In order to further promote green living habits in school, students who had joined the education talks were invited to participate in the environmental protection tips and slogan competition 2012. More than 500 students from different school have participated in the competition. Undoubtedly it could help students to have a better understanding on environmental protection. The winning entries were also displayed in the “One One One Charity Baby Walkathon 2012”.

三位得獎者及其作品  
The winners (Chinese only)

走前要關燈，日日省一蚊。  
鄭皓文同學（冠軍）

循環再造是美德，  
環保意識放第一。  
林凱盈同學（亞軍）

循環再用，  
物盡其用。  
曾璟熙同學（季軍）





## 鳴謝團體及人士

## Acknowledgements of groups and individuals

親子王國有限公司

Baby-Kingdom.com Limited

天星小輪有限公司

The Star Ferry Company Limited

中華廚房

Chinese Kitchen Company Limited

3300 牦牛奶粉

3300 Yak Milk Powder

凌治會計管理有限公司

C & Y Accounting Management Limited

玩學堂

Play n Learn

中國星集團

China Star Entertainment Group

黃浩然先生

Mr. Wong Ho Yin, Raymond

車淑梅女士

Ms. Che Shuk Mui

康樂文化事務署(油尖旺區)

The Leisure and Cultural Services Department (Yau Tsim Mong District)

星光大道管理有限公司

Avenue of Stars Management Company Limited

大埔環保會

Tai Po Environmental Association

義務工作發展局

Agency for Volunteer Service

加拿大神召會嘉智中學

PAOC Ka Chi Secondary School

親子尖子

iKid Magazine

香港女童軍總會

Hong Kong Girl Guides Association

全人發展中心

Whole Person Development Center (iCan Group)

香港鐵路有限公司

MTR Corporation Limited







**BABY KINGDOM ENVIRONMENTAL PROTECTION EDUCATION FUND LIMITED**  
**REPORT OF THE DIRECTORS**

The board of directors has pleasure in submitting its annual report and the audited financial statements for the year ended December 31, 2012.

**PRINCIPAL ACTIVITIES**

The principal activities of the Company during the year are to promote and communicate the environmental protection.

**RESULTS**

The results of the Company for the year ended December 31, 2012 and the state of affairs of the Company as at that date are set out in the accompanying financial statements.

**FIXED ASSETS**

Movements in fixed assets are disclosed in Note 7 to the financial statements.

**DIRECTORS**

The following persons were directors of the Company during the year and up to the date of this report:-

Chow Wai Chung  
Sip Ka Lung

In accordance with the Association's articles of association, the term of office of a director is two years and at the end of every term of office the director shall retire from office, but shall be eligible for re-election.

**DIRECTORS' INTEREST IN CONTRACTS**

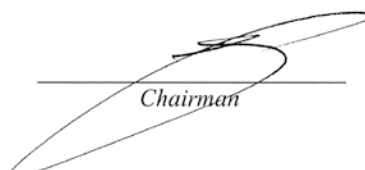
Except as disclosed in note 11, no contracts of significance, to which the Company was a party and in which a Director if the Company had a material interest, subsisted at the end of the year or at any time during the year.

At no time during the year was the Company a party to any arrangement to enable the Directors of the Company to acquire benefits by means of the acquisition of shares in or debentures of the Company or any other body corporate.

**AUDITOR**

The financial statements of the Company for the year ended December 31, 2011 was audited by Eddie M. T. Ng & Co., Certified Public Accountant (Practising), who retired. A resolution for the appointment of K. C. Chan, Certified Public Accountant, as auditor of the Company is to be proposed at the forthcoming annual general meeting.

*On behalf of the Board*

  
Chairman

Hong Kong,



**K. C. CHAN, CPA (Practising)**  
*Certified Public Accountant*

*Flat D, 2/F., Mei Tak Building, No. 33 Kwong Fuk Road, Tai Po, N.T., Hong Kong.*

Tel: (852) 2660-0616

Fax: (852) 2663-3208

**INDEPENDENT AUDITOR'S REPORT TO THE MEMBERS OF  
BABY KINGDOM ENVIRONMENTAL PROTECTION EDUCATION FUND LIMITED**  
*(incorporated in Hong Kong with liability limited by guarantee and not having a share capital)*

We have audited the financial statements of Baby Kingdom Environmental Protection Education Fund Limited set out on pages 4 to 13, which comprise the balance sheet as at December 31, 2012 and the statement of comprehensive income, statement of changes in members' funds and statement of cash flows for the year then ended, and a summary of significant accounting policies and other explanatory information.

**Directors' responsibilities for the financial statements**

The directors are responsible for the preparation and presentation of these financial statements in accordance with the Hong Kong Financial Reporting Standards (HKFRS) issued by the Hong Kong Institute of Certified Public Accountants (HKICPA) and the Hong Kong Companies Ordinance and for such internal control as the directors determine is necessary to enable the preparation of financial statements that are free from material misstatement, whether due to fraud or error.

**Auditor's responsibility**

Our responsibility is to express an opinion on these financial statements based on our audit. This report is made solely to you, as a body, in accordance with Section 141 of the Hong Kong Companies Ordinance and for no other purpose. We do not assume responsibility towards or accept liability to any other person for the contents of this report.

We conducted our audit in accordance with Hong Kong Standards on Auditing issued by the HKICPA. Those standards require that we comply with the ethical requirements and plan and perform the audit to obtain reasonable assurance as to whether the financial statements are free from material misstatement. An audit involves performing procedures to obtain audit evidence about the amounts and disclosures in the financial statements. The procedures selected depend on the auditor's judgement, including the assessment of the risks of material misstatement of the financial statements, whether due to fraud or error. In making those risk assessments, the auditor considers internal control relevant to the entity's preparation and true and fair presentation of the financial statements in order to design audit procedures that are appropriate in the circumstances, but not for the purpose of expressing an opinion on the effectiveness of the entity's internal control. An audit also includes evaluating the appropriateness of accounting policies used and the reasonableness of accounting estimates made by the directors, as well as evaluating the overall presentation of the financial statements.

We believe that the audit evidence we have obtained is sufficient and appropriate to provide a basis for our audit opinion.

**K. C. CHAN, CPA (Practising)**  
*Certified Public Accountant*

*Flat D, 2/F., Mei Tak Building, No. 33 Kwong Fuk Road, Tai Po, N.T., Hong Kong.*

Tel: (852) 2660-0616


Fax: (852) 2663-3208

**INDEPENDENT AUDITOR'S REPORT TO THE MEMBERS OF  
BABY KINGDOM ENVIRONMENTAL PROTECTION EDUCATION FUND LIMITED**  
*(incorporated in Hong Kong with liability limited by guarantee and not having a share capital)*

**Opinion**

In our opinion, the financial statements give a true and fair view of the state of the company's affairs as at December 31, 2012 and of its deficit and cash flows for the year then ended in accordance with HKFRS and have been properly prepared in accordance with the Hong Kong Companies Ordinance.

**For and on behalf of**

  
Chan Kin Cheong  
Certified Public Accountant (Practising)  
Hong Kong.

**BABY KINGDOM ENVIRONMENTAL PROTECTION EDUCATION FUND LIMITED**  
**STATEMENT OF COMPREHENSIVE INCOME**  
**FOR THE YEAR ENDED DECEMBER 31, 2012**  
*(Expressed in Hong Kong dollars)*

	<u>NOTE</u>	<u>2012</u> HK\$	<u>2011</u> HK\$
TURNOVER	4	362,450	10,088
LESS : COST OF ACTIVITY			
Advertising		9,810	-
Consultancy fee		195,000	-
Insurance		1,500	-
Printing and stationery		2,835	-
Production		107,512	-
Service charge		145,000	-
Sundry expenses		7,864	15,000
Transportation and miscellaneous		3,511	1,104
		<u>473,032</u>	<u>16,104</u>
GROSS LOSS		(110,582)	(6,016)
<b><u>OTHER REVENUES</u></b>			
Donation received	5	1,100,000	100,500
		<u>989,418</u>	<u>94,484</u>
<b><u>ADMINISTRATIVE EXPENSES</u></b>			
Audit fee		5,700	5,700
Bank charges		4,871	1,770
Business registration and license fees		-	1,250
Depreciation		2,446	2,286
Insurance		2,837	1,617
Legal and professional fee		22,500	7,520
Membership fee		-	1,000
Mandatory provident funds		20,297	3,387
Printing, stationery and postage		11,779	1,290
Secretarial fee		2,200	-
Staff salaries and allowances		253,195	76,419
Sundry expenses		382	358
Travelling expenses		1,023	191
		<u>327,230</u>	<u>102,788</u>
FINANCE COSTS			
Interest expenses		<u>-</u>	<u>1</u>
SURPLUS/(DEFICIT) FOR THE YEAR & TOTAL COMPREHENSIVE INCOME FOR THE YEAR		<u>662,188</u>	<u>(8,305)</u>

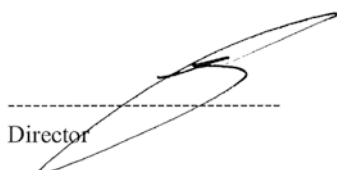
The accompanying notes form an integral part of these financial statements.

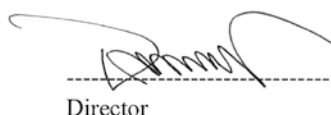
K. C. CHAN, CPA (Practising)  
Certified Public Accountant

**BABY KINGDOM ENVIRONMENTAL PROTECTION EDUCATION FUND LIMITED**  
**BALANCE SHEET AS AT MARCH 31, 2012**  
(Expressed in Hong Kong dollars)

	NOTE	2012 HK\$	2011 HK\$
<b>Non-current assets</b>			
Fixed assets	7	7,498	9,144
<b>Current Assets</b>			
Deposits paid		100	100
Cash and cash equivalents	3(e)	717,249	49,904
		717,349	50,004
<b>Less: Current liabilities</b>			
Accrued expenses		51,075	47,764
Amount due to a related company	13	52,167	51,967
		103,242	99,731
<b>Net current assets / (liabilities)</b>		614,107	(49,727)
<b>NET ASSETS / (LIABILITIES)</b>		<b>621,605</b>	<b>(40,583)</b>
<i>REPRESENTED BY:</i>			
Accumulated fund		321,605	(40,583)
Reserve for funding future activity		300,000	-
<b>Total member's fund held</b>		<b>621,605</b>	<b>(40,583)</b>

APPROVED BY THE BOARD OF DIRECTORS ON

  
Director

  
Director

The accompanying notes form an integral part of these financial statements.



**BABY KINGDOM ENVIRONMENTAL PROTECTION EDUCATION FUND LIMITED**  
**STATEMENT OF CASH FLOWS**

**FOR THE YEAR ENDED DECEMBER 31, 2012**

*(Expressed in Hong Kong dollars)*

	2012 HK\$	2011 HK\$
<b>OPERATING ACTIVITIES</b>		
Surplus/(Deficit) for the year	662,188	(8,305)
Adjustments:-		
Depreciation on fixed assets	2,446	2,286
<b>OPERATING SURPLUS/(DEFICIT) BEFORE CHANGES IN WORKING CAPITAL</b>	664,634	(6,019)
Increase in deposits paid	-	(100)
Increase in accrued expenses	3,311	43,264
Increase in amount due to a related company	200	21,911
<b>NET CASH GENERATED FROM/(USED IN) OPERATIONS</b>	668,145	59,056
<b>INVESTING ACTIVITIES</b>		
Payments to acquire fixed assets	(800)	(11,430)
<b>NET CASH USED IN INVESTING ACTIVITIES</b>	(800)	(11,430)
<b>NET INCREASE IN CASH AND CASH EQUIVALENTS</b>	667,345	47,626
<b>CASH AND CASH EQUIVALENTS AT BEGINNING OF YEAR</b>	49,904	2,278
<b>CASH AND CASH EQUIVALENTS AT END OF YEAR</b>	717,249	49,904
<b>ANALYSIS OF CASH AND CASH EQUIVALENTS AT END OF YEAR</b>		
Cash at bank	716,289	49,818
Cash in hand	960	86
	717,249	49,904

The accompanying notes form an integral part of these financial statements.

K. C. CHAN, CPA (Practising)  
Certified Public Accountant

**BABY KINGDOM ENVIRONMENTAL PROTECTION EDUCATION FUND LIMITED**  
**STATEMENT OF CHANGES IN MEMBERS' FUND BALANCES**  
**FOR THE YEAR ENDED DECEMBER 31, 2012**  
*(Expressed in Hong Kong dollars)*

	Accumulated <u>fund</u>	Reserve for the funding of future <u>activity</u>	<u>Total</u>
Balance at January, 1, 2011	(32,278)	-	(32,278)
Deficit for the year	(8,305)	-	(8,305)
	<hr/>	<hr/>	<hr/>
Balance at December 31, 2011	<u>(40,583)</u>	<u>-</u>	<u>(40,583)</u>
Balance at January 1, 2012	(40,583)	-	(40,583)
Transfer to reserve for the funding of future activity	(300,000)	300,000	-
Surplus for the year	<u>662,188</u>	<u>-</u>	<u>662,188</u>
Balance at December 31, 2012	<u><u>321,605</u></u>	<u><u>300,000</u></u>	<u><u>621,605</u></u>

The accompanying notes form an integral part of these financial statements.

**BABY KINGDOM ENVIRONMENTAL PROTECTION EDUCATION FUND LIMITED**  
**NOTES TO THE ACCOUNTS**

**1. GENERAL INFORMATION**

Baby Kingdom Environmental Protection Education Fund Limited ('the Company') is a company incorporated in Hong Kong with liability limited by guarantee.

The Company is a non-profit making organization and the principal activities of the Company are to promote and communicate the environmental protection. The Company's registered office is located at 1/F., Houtex Industrial Building, 16 Hung To Road, Kwun Tong, Kowloon, Hong Kong.

**2. STATEMENT OF COMPLIANCE**

- (a) These financial statements have been prepared in accordance with all applicable Hong Kong Financial Reporting Standards (HKFRSs), which collective term includes all applicable individual Hong Kong Financial Reporting Standards, Hong Kong Accounting Standards (HKASs) and Interpretations issued by the Hong Kong Institute of Certified Public Accountants (HKICPA), accounting principles generally accepted in Hong Kong and the requirements of the Hong Kong Companies Ordinance.
- (b) The HKICPA has issued a number of new and revised HKFRSs and Interpretations that are first effective or available for early adoption for the current accounting period of the Company. There have been no significant changes to the accounting policies applied in these financial statements for the years presented as a result of these developments.

The Company has not applied any new standard or interpretation that is not yet effective for the current accounting period.

- (c) A summary of significant accounting policies is set out in note 3.

**3. SUMMARY OF SIGNIFICANT ACCOUNTING POLICIES**

- (a) Basis of preparation of financial statements

The measurement basis used in preparing the financial statements is historical cost.

- (b) Revenue recognition

Donations received, activities income, etc are recognized on the accrual basis. Interest income is recognized on a time proportion basis.

- (c) Fixed assets

Fixed assets represent property, plant and equipment and are stated at historical cost less accumulated depreciation and impairment losses.

The depreciable amount of an item of property, plant and equipment is allocated on a systematic basis over its estimated useful lives of 5 years using the straight-line method.

**BABY KINGDOM ENVIRONMENTAL PROTECTION EDUCATION FUND LIMITED**  
**NOTES TO THE ACCOUNTS**

**3. SUMMARY OF SIGNIFICANT ACCOUNTING POLICIES (continue)**

(d) Impairment of assets

An assessment is made at each balance sheet date to determine whether there is any indication of impairment or reversal of previous impairment, including items of property, plant and equipment. In the event that an asset's carrying amount exceeds its recoverable amount, the carrying amount is reduced to recoverable amount and an impairment loss is recognized in the statement of comprehensive income. A previously recognized impairment loss is reversed only if there has been a change in the estimates used to determine the recoverable amount, however not to an amount higher than the carrying amount that would have been determined (net of amortization or depreciation), had no impairment losses been recognized for the asset in prior years.

(e) Cash and cash equivalents

Cash comprises cash on hand and at bank and demand deposits with bank. Cash equivalents are short-term, highly liquid investments that are readily convertible to known amounts of cash and which are subject to an insignificant risk of changes in value.

(f) Other receivables

Other receivables is stated in the statement of financial position at cost less provision. Provision is made against other receivable to the extent that they are considered to be

(g) Employee benefits

The Company operates a Mandatory Provident Fund Scheme ('the MPF scheme') under the Hong Kong Mandatory Provident Fund Schemes Ordinance for employees employed under the jurisdiction of the Hong Kong Employment Ordinance. The MPF scheme is a defined contribution retirement scheme administered by independent trustees. Under the MPF scheme, the employer and its employees are each required to make contributions to the scheme at 5% of the employees' relevant income, subject to a cap of monthly relevant income of HK\$20,000. Contributions to the scheme vest immediately.

The Company pays contributions to the MPF scheme on a mandatory basis. The Company has no further payment obligations once the contributions have been paid. The contributions are recognized as employee benefit expense when they are due and are not reduced by contributions forfeited by those employees who leave the scheme prior to vesting fully in the contributions. Prepaid contributions are recognized as an asset to the extent that a cash refund or a reduction in the future payments is available.



**BABY KINGDOM ENVIRONMENTAL PROTECTION EDUCATION FUND LIMITED**  
**NOTES TO THE ACCOUNTS**

**3. SUMMARY OF SIGNIFICANT ACCOUNTING POLICIES (continue)**

(h) Related

For the purpose of these financial statements, related party includes a person and entity as de

- (a) A person or a close member of that person's family is related to the Company if that person:
  - (i) is a member of the key management personnel of the Company or of a parent of the Company;
  - (ii) has control over the Company; or
  - (iii) has joint control or significant influence over the reporting entity or has significant voting power in it.
- (b) An entity is related to the Company if any of the following conditions applies:
  - (i) the entity and the Company are members of the same group (which means that each parent, subsidiary and fellow subsidiary is related to the others).
  - (ii) either entity is an associate or joint venture of the other entity (or of a member of a group of which the other entity is a member).
  - (iii) both entities are joint ventures of a third entity.
  - (iv) either entity is a joint venture of a third entity and the other entity is an associate of the third entity.
  - (v) the entity is a post-employment benefit plan for the benefit of employees of either the Company or an entity related to the Company. If the reporting entity is itself such a plan, the sponsoring employers are also related to the plan.
  - (vi) the entity is controlled or jointly controlled by a person identified in (a).
  - (vii) a person identified in (a)(i) has significant voting power in the entity

K. C. CHAN, CPA (Practising)  
Certified Public Accountant

**BABY KINGDOM ENVIRONMENTAL PROTECTION EDUCATION FUND LIMITED**  
**NOTES TO THE ACCOUNTS**

**4. TURNOVER**

Turnover represents activities income received during the year.

**5. OTHER REVENUE**

	<u>2012</u> HK\$	<u>2011</u> HK\$
Donation received	<u>1,100,000</u>	<u>100,500</u>

**6. TAXATION**

No provision for Hong Kong profits tax has been made as the Company, being a charitable institution or trust of public character, is exempted from tax under s.88 of the Inland Revenue Ordinance.

**7. FIXED ASSETS**

	<u>Office equipment</u> HK\$
COST	
As at 1/1/2011	-
Additions	<u>11,430</u>
As at 31/12/2011	11,430
Additions	<u>800</u>
As at 31/12/2012	<u>12,230</u>
ACCUMULATED DEPRECIATION	
As at 1/1/2011	-
Charge for the year	<u>2,286</u>
As at 31/12/2011	2,286
Charge for the year	<u>2,446</u>
As at 31/12/2012	<u>4,732</u>
NET BOOK VALUE	
As at 31/12/2012	<u>7,498</u>
As at 31/12/2011	<u>9,144</u>

**8. CONTINGENT LIABILITIES AND COMMITMENTS**

At December 31, 2012, the Company had no significant commitments or contingent liabilities.

**9. DIRECTORS' REMUNERATION**

No directors' remuneration required to be disclosed pursuant to Section 161 of the Companies Ordinance was incurred for the year (2011: Nil)

**BABY KINGDOM ENVIRONMENTAL PROTECTION EDUCATION FUND LIMITED**  
**NOTES TO THE ACCOUNTS**

**10. RELATED PARTY TRANSACTIONS**

During the year, the Company received donation of HK\$1,100,000 from a related company and directors (2011: HK\$100,500).

Apart from transactions and balances elsewhere disclosed in these financial statements, there were no significant related party transactions undertaken by the Company at any time during the year.

**11. FINANCIAL RISK MANAGEMENT**

The Company is exposed to various kinds of risks in its operation and financial instruments. The Company's risk management objectives and policies mainly focus on minimizing the potential adverse effects of these risks on the Company by closely monitoring the individual exposure as follows:

(a) Market risk

As the Company is just a member-based non-profitmaking organisation, it does not expose to market risk.

(b) Credit risk

The Company's credit risk is primarily attributable to cash and cash equivalents. As these are held by major banks in Hong Kong which are believed to be of high credit quality, the overall credit risk is limited.

(c) Liquidity risk

As the Company maintains sufficient liquid funds, the liquidity risk is considered limited.

(d) Cash flow interest rate risk

The Company is exposed to cash flow interest-rate risk which is attributable to its cash and cash equivalents held with banks. The risk is considered limited as the range of interest rates fluctuation is not significant.

(e) Sensitivity analysis

No sensitivity analysis for the Company's exposure to financial management risks has been presented since the management's assessment of the associated risks is insignificant.



K. C. CHAN, CPA (Practising)  
Certified Public Accountant

***BABY KINGDOM ENVIRONMENTAL PROTECTION EDUCATION FUND LIMITED***  
***NOTES TO THE ACCOUNTS***

**12. CAPITAL MANAGEMENT**

The Company's primary objectives when managing capital are to safeguard the Company's ability to continue as a going concern and to meet its liabilities as they fall due for the foreseeable future.

The Company's defined "capital" as including all funds maintained by the Company.

The Company actively and regularly reviews and manages its capital structure to ensure the effective use of the funds and the sound financial status of the Company.

**13. AMOUNT DUE TO A RELATED COMPANY**

The amount is interest free, unsecured and with no fixed terms of repayment.

\*\*\* **END** \*\*\*

## 捐款支持我們！ Donations to support us!

### 捐款表格 Donation Form

本人願意捐助HK\$ \_\_\_\_\_ 予親子王國環保教育基金

I am willing to donate HK \$ \_\_\_\_\_ to Baby Kingdom Environmental Protection Education Fund.

### 個人資料 Personal Particulars

姓名／機構名稱：

Name / Organization : \_\_\_\_\_

地址 Address : \_\_\_\_\_

電話 Phone No.: \_\_\_\_\_ 傳真 Fax No.: \_\_\_\_\_

電郵 E-mail : \_\_\_\_\_

### 捐款方法 Donation Methods

☐ 支票 Cheque

\* 支票抬頭：親子王國環保教育基金有限公司

Payable to : Baby Kingdom Environmental Protection Education Fund Limited

☐ 直接存款 恒生銀行戶口：210-193-116-001（請將入數紙寄回辦事處）

Direct Deposit Hang Seng Bank Account: 210-193-116-001 (Please send the bank in slip to our office)

☐ 信用咭 Credit Card :

☐ Master

☐ Visa

☐ 單次捐款 One-Time donation

☐ 每月捐款 Monthly donation

信用咭號碼 Credit Card No.: \_\_\_\_\_

有效日期 Expiry Date.: \_\_\_\_\_ (月 month) / \_\_\_\_\_ (年 year)

持咭人姓名 Name of Cardholder: \_\_\_\_\_

持咭人簽名 Cardholder's signature: \_\_\_\_\_

\* 請寄支票及捐款表格至：親子王國環保教育基金  
九龍觀塘鴻圖道十六號志成工業大廈一樓

\* Please send the cheque and donation form to: Baby Kingdom Environmental Protection Education Fund  
1/F, Houtex Industrial Building, 16 Hung To Road, Kwun Tong, Kowloon

電話 Tel: 2103 1316

傳真 Fax: 2103 1344

網頁 Website: [www.baby-kingdom.org](http://www.baby-kingdom.org)

電郵查詢 Email enquiries: [info@baby-kingdom.org](mailto:info@baby-kingdom.org)

\* 親子王國環保教育基金是根據〈稅務條例〉第88條獲豁免繳稅之慈善團體

\* Baby Kingdom Environmental Education Protection Fund is a registered charitable institution exempt from tax under Section 88 of the Inland Revenue Ordinance

\* 捐款港幣一百元或以上可獲發免稅收據

\* A tax - deductible receipt will be issued for donations of \$ 100 or above.



# 義工招募 Volunteers Recruitment

我們誠邀你參與，成為「親子王國環保教育基金」的義工，加入我們的工作，你可以協助教育，籌款，藉此幫助有需要的人。We sincerely invite you to join us and become a volunteer of "Baby kingdom Environmental Protection Education Fund". Join our volunteers to help education and fundraising, so as to help more people in need.

## 一、個人資料

中文姓名：\_\_\_\_\_ 英文姓名：\_\_\_\_\_ 性別：\_\_\_\_\_

電話號碼：（住宅）\_\_\_\_\_（手提電話）：\_\_\_\_\_

住址（中文）：\_\_\_\_\_

電郵地址：\_\_\_\_\_

教育程度：☐ 小學或以下 ☐ 中一至中三 ☐ 中四至中七 ☐ 大專或以上，專科為：

職業：☐ 在職人士，性質：\_\_\_\_\_ ☐ 家庭主婦 ☐ 退休 ☐ 待業 ☐ 其他（請註明）：\_\_\_\_\_

## 二、義工經驗及技能

義工經驗：☐ 沒有 ☐ 有（請列明參與義工年期：\_\_\_\_\_ 性質 \_\_\_\_\_）

義工訓練：☐ 沒有 ☐ 有（請列明參與計劃或訓練內容）：\_\_\_\_\_

現在有否參與其他義務工作？☐ 沒有 ☐ 有（請註明）：\_\_\_\_\_

## 三、希望能參與之服務（可選多項）

☐ 個別籌款活動 ☐ 文書處理 ☐ 校園環保教育計劃

☐ 其他：\_\_\_\_\_

## 四、可提供義務工作的時段（可選多項✓）

時間/星期	星期一	星期二	星期三	星期四	星期五	星期六	星期日
上午							
下午							
晚上							

## 五、參加義工的期望（可選多項）

☐ 了解何為義務工作 ☐ 增加對自己的認識 ☐ 學習人際溝通 ☐ 認識新朋友

☐ 提升領導才能 ☐ 幫助有需要人士 ☐ 其他（請註明）：\_\_\_\_\_

## 六、緊急聯絡人

姓名：\_\_\_\_\_ 電話：\_\_\_\_\_ 關係：\_\_\_\_\_

申請人簽署：\_\_\_\_\_ 日期：\_\_\_\_\_

（如未滿十八歲者，請先獲得家長同意，並於下方簽署表示。）

家長簽署：\_\_\_\_\_ 日期：\_\_\_\_\_

申請表格所提供的資料祇會用於與申請義務工作有關之事宜。根據個人資料（私隱）條例，你有權要求查閱及更正所提供的個人資料。倘你對填報的個人資料有任何疑問，包括要求查閱或更改資料等，請與本中心職員聯絡。

多謝參與義務工作！

請將有關之表格傳真至：2103 1344 或 電郵至：info@baby-kingdom.org

郵寄地址：九龍觀塘鴻圖道十六號志成工業大廈一樓

查詢電話：2103 1316





# 玩學堂

## play n learn

口才及藝術學院



兒童潛能發展

司儀及專業培訓

演藝製作

• 皇牌口才訓練課程

• 舞蹈課程

• 魔術課程

• 音樂課程

校長及課程創作總監  
梁繼璋先生



📍 尖沙咀總校  
九龍尖沙咀山林道7號漢國佐敦中心8樓802室

📍 大埔分校  
新界大埔汀角路29-35號榮暉商場4號地舖

📞 查詢熱線: 2882 0688

📞 傳真號碼: 2317 1880

🌐 網址: <http://www.playnlearn.com.hk/>





親子王國環保教育基金

Baby Kingdom Environmental Protection Education Fund

九龍觀塘鴻圖道十六號志成工業大廈一樓

1/F, Houtex Industrial Building, 16 Hung To Road, Kwun Tong, Kowloon

電話Tel. : 2103 1316

網址URL : [www.baby-kingdom.org](http://www.baby-kingdom.org)

傳真Fax : 2103 1344

電郵Email : [info@baby-kingdom.org](mailto:info@baby-kingdom.org)